

# DJF Whiskey River 9006W

## DJF Whiskey River 9006W EPDs

BW +3.9      YW +96  
WW +50      MWW +48  
Milk +23

### Igenity

Tenderness 7  
% Choice 7  
YG 6

Relative Feed Intake (RFI) 6

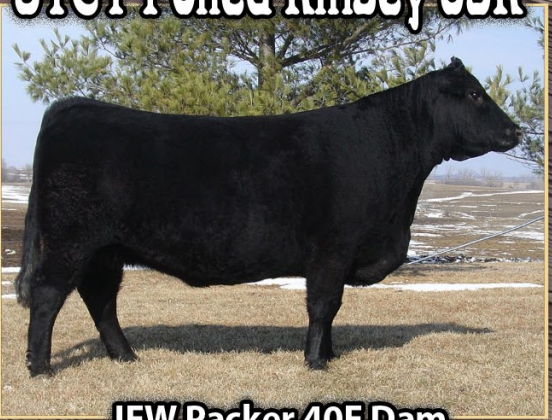


**Selling at the  
National Sale in Denver**

DJF Whiskey River 9006W  
Sire - JSR Jamaca 431  
Dam - STCY Polled Kinsey 05K

DOB: 3-13-09  
BW: 86  
REG. NO: TP658499

## STCY Polled Kinsey 05K



JFW Packer 40F Dam

Entered in the  
National Sales Sale  
and the  
"Breeder's Choice"  
Sales Sire Futurity in  
Denver

## DJF Rolen 5002R



Maternal Brother



Maryville, MO

David and Janelle Frueh  
660-927-3600

Scott, Stacy and Landon Liebhart  
660-927-3304

[www.silverspursalers.com](http://www.silverspursalers.com)

[silverspur@embarqmail.com](mailto:silverspur@embarqmail.com)